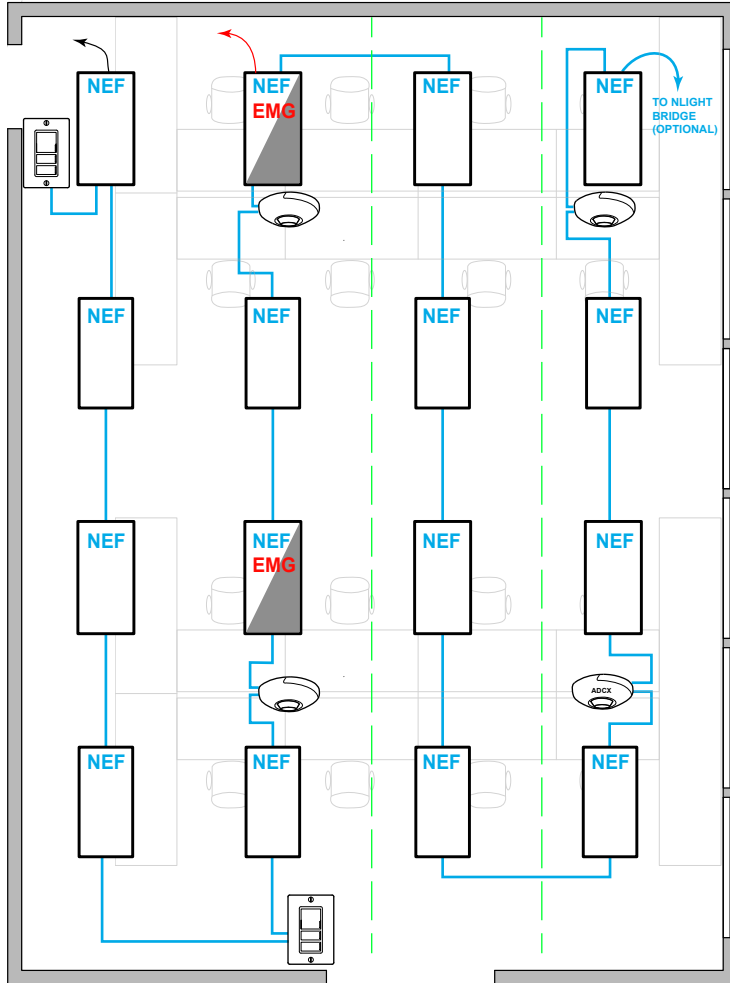


## OPEN OFFICE WITH NLIGHT ENABLED FIXTURES



### SEQUENCE OF OPERATION

#### LIGHT

- ALL FIXTURES ARE NLIGHT ENABLED.
- PROVIDE UNSWITCHED HOT TO ALL LUMINAIRES.

#### OCCUPANCY

- LIGHTS SHALL AUTOMATICALLY TURN OFF WHEN UNOCCUPIED

#### DAYLIGHT

- DAYLIGHT SENSOR IN PRIMARY DAYLIGHT ZONE TO CONTROL BOTH PRIMARY AND SECONDARY DAYLIGHT ZONE (IF APPLICABLE).
- EXEMPT IF GENERAL LIGHTING LOAD IN EITHER PRIMARY OR SECONDARY DAYLIGHT ZONE IS LESS THAN 120W

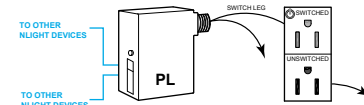
#### MANUAL

- SINGLE POLE DIMMING SWITCH
- ON/OFF/RAISE/LOWER

#### TIME CLOCK (ADDITIONAL OPTIONS)

- ROOM CAN BE CONNECTED TO NLIGHT BACKBONE TO ENABLE NETWORK CONTROL OR AUTOMATIC DEMAND RESPONSE
- OCCUPANCY SENSORS CAN BE ENABLED OR DISABLED BASED ON TIME SCHEDULE.
- FOR NETWORK OPTIONS, SEE NLIGHT BACKBONE DIAGRAM.

### PLUG LOAD CONTROL DIAGRAM



(REQUIRED FOR NEW POWER DISTRIBUTION)

### DIAGRAM LEGEND

- CAT5 WIRES
- NORMAL LINE FEED CONSTANT HOT
- EM LINE FEED CONSTANT HOT >30ms TRANSFER

3

### BILL OF MATERIAL

|                  | QTY | PRODUCT #                 | DESCRIPTION   |
|------------------|-----|---------------------------|---|
|                  | -   | <b>NPP20-PL</b>           | ON/OFF 20 AMPS POWER PACK.  |
|                  | 1   | <b>NCM-PDT-9-ADCX-RJB</b> | CEILING MOUNTED OCCUPANCY +PHOTO SENSOR. PHOTOCELL IS DUAL ZONE TYPE. |
|                  | 1   | <b>NCM-PDT-9-RJB</b>      | CEILING MOUNTED OCCUPANCY SENSOR.                                     |
|                  | 2   | <b>NPODM-DX</b>           | SINGLE GANG, SINGLE ZONE DIMMING SWITCH                               |
| <b>NEF</b>       | 14  | -                         | NLIGHT ENABLED FIXTURE WITH CONSTANT HOT                              |
| <b>NEF (EMG)</b> | 2   | -                         | NLIGHT ENABLED FIXTURE WITH EM CONSTANT HOT ON INVERTER/GENERATOR     |

### SUPPORTS THE FOLLOWING REQUIREMENTS

- FULL AUTO-OFF VIA OCCUPANCY SENSOR (SECTION 130.1c)
- LOCAL SWITCH (SECTION 130.1a)
- MULTI-LEVEL/ DIMMING CONTROL (SECTION 130.1b)
- AUTOMATIC DEMAND RESPONSE (ADR) READY (SECTION 130.1e)
- DAYLIGHT HARVESTING (SECTION 130.1d)
- PLUG-LOAD CONTROL (SECTION 130.5d)