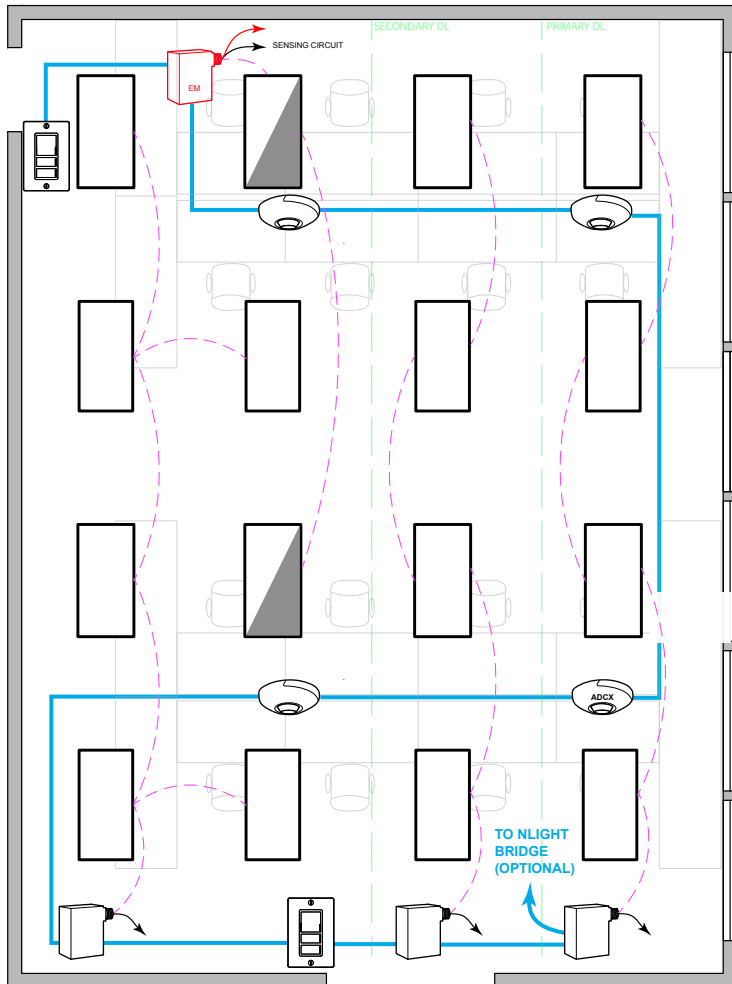


OPEN OFFICE WITH 0-10V FIXTURES



SEQUENCE OF OPERATION

LIGHT

- ALL FIXTURES ARE 0-10V DIMMING.
- PROVIDE SWITCH LEG FROM RELAY TO ALL LUMINAIRES.

OCCUPANCY

- LIGHTS SHALL AUTOMATICALLY TURN OFF WHEN UNOCCUPIED.

DAYLIGHT

- DAYLIGHT SENSOR IN PRIMARY DAYLIGHT ZONE TO CONTROL BOTH PRIMARY AND SECONDARY DAYLIGHT ZONE (IF APPLICABLE).
- EXEMPT IF GENERAL LIGHTING LOAD IN EITHER PRIMARY OR SECONDARY DAYLIGHT ZONE IS LESS THAN 120W

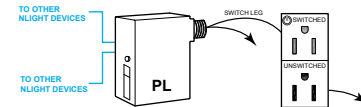
MANUAL

- SINGLE POLE DIMMING SWITCH
- ON/OFF/RAISE/LOWER

TIME CLOCK (ADDITIONAL OPTIONS)

- ROOM CAN BE CONNECTED TO NLIGHT BACKBONE TO ENABLE NETWORK CONTROL OR AUTOMATIC DEMAND RESPONSE
- OCCUPANCY SENSORS CAN BE ENABLED OR DISABLED BASED ON TIME SCHEDULE.
- FOR NETWORK OPTIONS, SEE NLIGHT BACKBONE DIAGRAM.

PLUG LOAD CONTROL DIAGRAM



(REQUIRED FOR NEW POWER DISTRIBUTION)

DIAGRAM LEGEND

- CAT5 WIRES
- SWITCH LEG & 0-10V WIRES
- NORMAL LINE FEED CONSTANT HOT
- EM LINE FEED CONSTANT HOT >30ms TRANSFER

BILL OF MATERIAL

| | QTY | PRODUCT # | DESCRIPTION |
|--|-----|---------------------------|---|
| | - | NPP20-PL | ON/OFF 20 AMPS POWER PACK. |
| | 1 | NCM-PDT-9-ADCX-RJB | CEILING MOUNTED OCCUPANCY +PHOTO SENSOR. PHOTOCELL IS DUAL ZONE TYPE. |
| | 3 | NCM-PDT-9-RJB | CEILING MOUNTED OCCUPANCY SENSOR. |
| | 2 | NPODM-DX | SINGLE GANG, SINGLE DIMMING SWITCH |
| | 3 | NPP16-D-EFP | 16 AMPS POWER PACK FOR 0-10V LUMINAIRE |
| | 1 | NPP16-D-ER-EFP | 16 AMPS EM POWER PACK FOR 0-10V LUMINAIRE |

SUPPORTS THE FOLLOWING REQUIREMENTS

- FULL AUTO-OFF VIA OCCUPANCY SENSOR (SECTION 130.1c)
- LOCAL SWITCH (SECTION 130.1a)
- MULTI-LEVEL/ DIMMING CONTROL (SECTION 130.1b)
- AUTOMATIC DEMAND RESPONSE (ADR) READY (SECTION 130.1e)
- DAYLIGHT HARVESTING (SECTION 130.1d)
- PLUG-LOAD CONTROL (SECTION 130.5d)