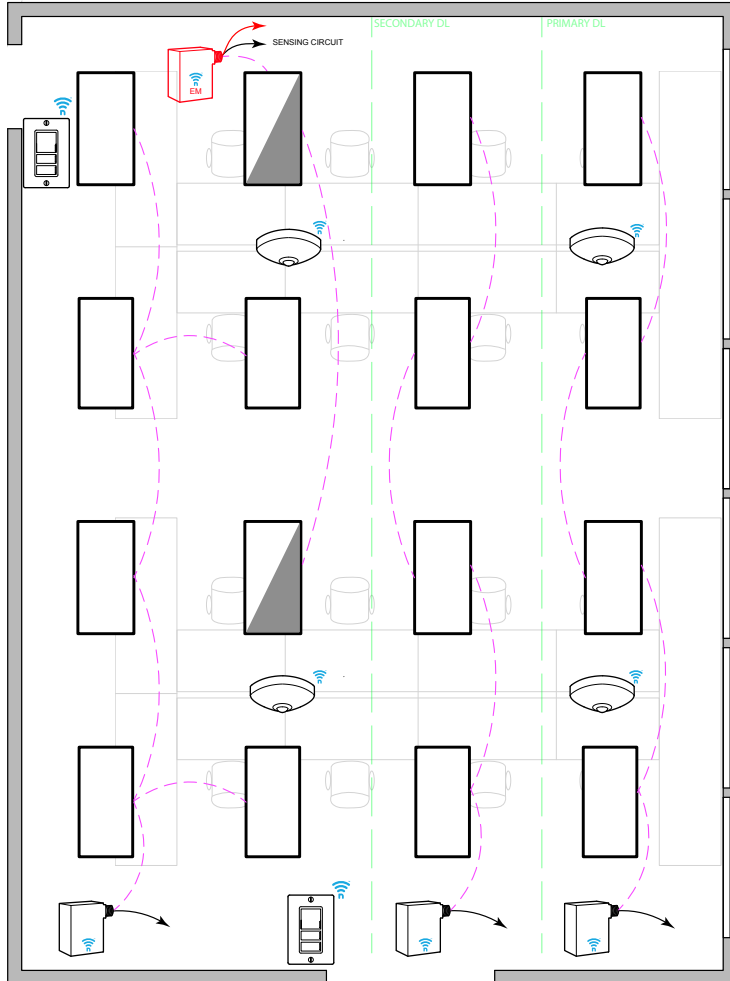


OPEN OFFICE WITH 0-10V FIXTURES WITH BATTERY DEVICES



SEQUENCE OF OPERATION

LIGHT

- ALL FIXTURES ARE 0-10V DIMMING.
- PROVIDE SWITCH LEG FROM RELAY TO ALL LUMINAIRES.

OCCUPANCY

- LIGHTS SHALL AUTOMATICALLY TURN OFF WHEN UNOCCUPIED

DAYLIGHT

- DAYLIGHT SENSOR IN PRIMARY DAYLIGHT ZONE TO CONTROL BOTH PRIMARY AND SECONDARY DAYLIGHT ZONE (IF APPLICABLE).
- EXEMPT IF GENERAL LIGHTING LOAD IN EITHER PRIMARY OR SECONDARY DAYLIGHT ZONE IS LESS THAN 120W

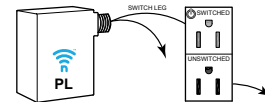
MANUAL

- SINGLE POLE DIMMING SWITCH
- ON/OFF/RAISE/LOWER

TIME CLOCK (ADDITIONAL OPTIONS)

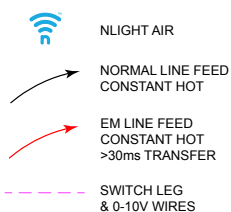
- ROOM CAN BE CONNECTED TO NLIGHT BACKBONE TO ENABLE NETWORK CONTROL OR AUTOMATIC DEMAND RESPONSE
- OCCUPANCY SENSORS CAN BE ENABLED OR DISABLED BASED ON TIME SCHEDULE.
- FOR NETWORK OPTIONS, SEE NLIGHT BACKBONE DIAGRAM.

PLUG LOAD CONTROL DIAGRAM



(REQUIRED FOR NEW POWER DISTRIBUTION)

DIAGRAM LEGEND



BILL OF MATERIAL

QTY	PRODUCT #	DESCRIPTION
-	RPP20-24V-EFP-G2	ON/OFF 20 AMP POWER PACK.
3	RPP20-D-EFP-G2	0-10V 20 AMP POWER PACK.
1	RPP20-D-EM-EFP-G2	0-10V 20 AMP 90 MIN. EM POWER PACK. > 30ms TRANSFER ALT. RPP20 D ER G2 (SHUNTING)
4	RCMSB-7-G2	CEILING MOUNTED OCCUPANCY + PHOTO SENSOR. PHOTO SENSOR IS DUAL ZONE TYPE. BATTERY POWERED
2	RPODB-DX-G2	SINGLE GANG, ONE ZONE DIMMING SWITCH (ON/OFF/RAISE/LOWER). BATTERY POWERED

SUPPORTS THE FOLLOWING REQUIREMENTS

- ✓ FULL AUTO-OFF VIA OCCUPANCY SENSOR (SECTION 130.1c)
- ✓ LOCAL SWITCH (SECTION 130.1a)
- ✓ MULTI-LEVEL/ DIMMING CONTROL (SECTION 130.1b)
- ✓ AUTOMATIC DEMAND RESPONSE (ADR) READY (SECTION 130.1e)
- ✓ DAYLIGHT HARVESTING (SECTION 130.1d)
- ✓ PLUG-LOAD CONTROL (SECTION 130.5d)