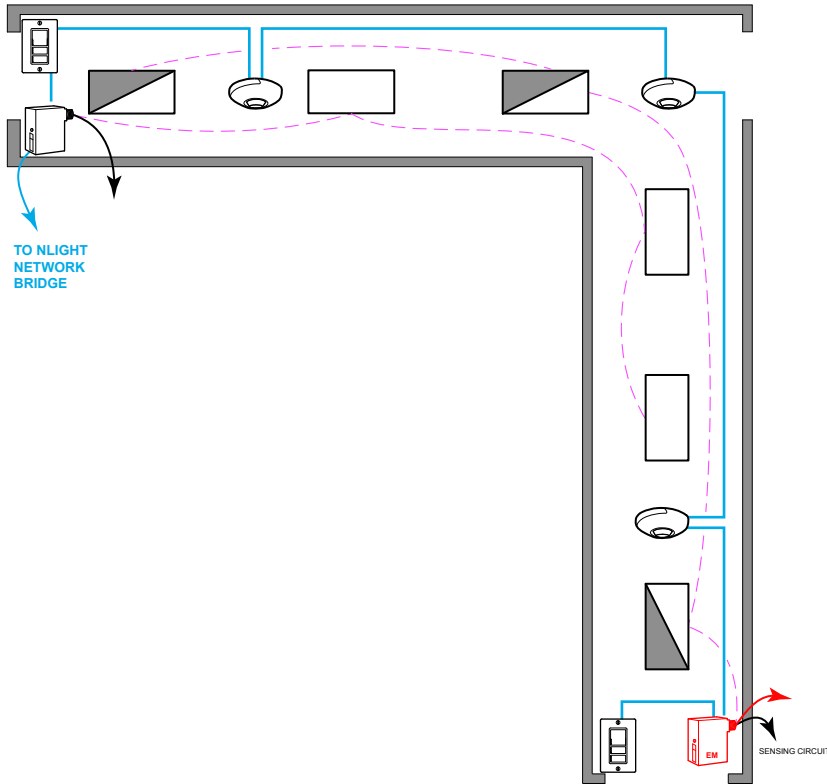


CORRIDOR WITH 0-10V FIXTURES



SEQUENCE OF OPERATION

LIGHT

- ALL FIXTURES ARE 0-10V DIMMING.
- PROVIDE SWITCH LEG FROM RELAY TO ALL LUMINAIRES.

OCCUPANCY

- LIGHTS AUTOMATICALLY GO TO 100% WHEN OCCUPIED, AND REDUCE TO PARTIAL 50% WHEN UNOCCUPIED.
- SECONDARY TIME OUT IS AVAILABLE TO TURN OFF THE LIGHT IF REQUIRED.

MANUAL

- SINGLE POLE DIMMING SWITCH
- ON/OFF/RAISE/LOWER
- 3-WAY SWITCH
- DIGITAL KEY SWITCH (OPTIONAL)

TIME CLOCK (ADDITIONAL OPTIONS)

- ROOM CAN BE CONNECTED TO NLIGHT BACKBONE TO ENABLE NETWORK CONTROL OR AUTOMATIC DEMAND RESPONSE
- OCCUPANCY SENSORS CAN BE ENABLED OR DISABLED BASED ON TIME SCHEDULE.
- FOR NETWORK OPTIONS, SEE NLIGHT BACKBONE DIAGRAM.

DIAGRAM LEGEND

- CAT5 WIRES
- SWITCH LEG & 0-10V WIRES
- NORMAL LINE FEED CONSTANT HOT
- EM LINE FEED CONSTANT HOT >30ms TRANSFER

BILL OF MATERIAL

	QTY	PRODUCT #	DESCRIPTION
	2	NPODM-DX	SINGLE GANG, SINGLE POLE DIMMING SWITCH
	3	NCM-10-RJB	CEILING MOUNTED OCCUPANCY SENSOR.
	1	NPP16-D-EFP	16 AMPS POWER PACK FOR 0-10V LUMINAIRE
	1	NPP16-D-ER-EFP	16 AMPS EM POWER PACK FOR 0-10V LUMINAIRE

SUPPORTS THE FOLLOWING REQUIREMENTS

- FULL AUTO-OFF VIA OCCUPANCY SENSOR (SECTION 130.1c)
- LOCAL SWITCH (SECTION 130.1a)
- MULTI-LEVEL/ DIMMING CONTROL (SECTION 130.1b)
- AUTOMATIC DEMAND RESPONSE (ADR) READY (SECTION 130.1e)
- DAYLIGHT HARVESTING (SECTION 130.1d)
- PLUG-LOAD CONTROL (SECTION 130.5d)