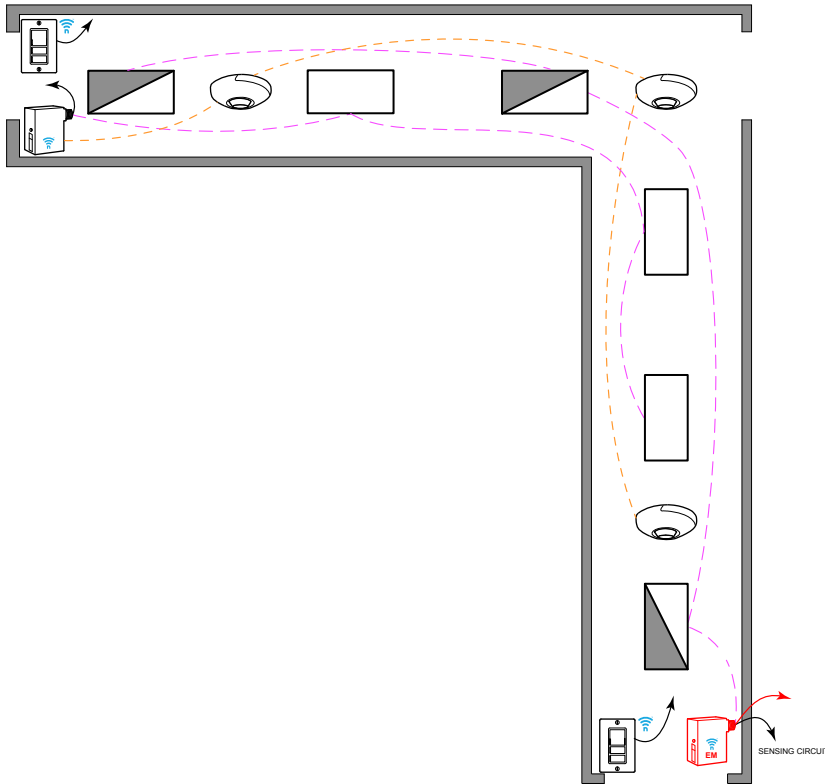


## CORRIDOR WITH 0-10V FIXTURES WITH POWERED DEVICES



### SEQUENCE OF OPERATION

#### LIGHT

- ALL FIXTURES ARE 0-10V DIMMING.
- PROVIDE SWITCH LEG FROM RELAY TO ALL LUMINAIRES.

#### OCCUPANCY

- LIGHTS AUTOMATICALLY GO TO 100% WHEN OCCUPIED, AND REDUCE TO PARTIAL 50% WHEN UNOCCUPIED.
- SECONDARY TIME OUT IS AVAILABLE TO TURN OFF THE LIGHT IF REQUIRED.

#### MANUAL

- SINGLE POLE DIMMING SWITCH
- ON/OFF/RAISE/LOWER
- 3-WAY SWITCH
- DIGITAL KEY SWITCH (OPTIONAL)

#### TIME CLOCK (ADDITIONAL OPTIONS)

- ROOM CAN BE CONNECTED TO NLIGHT BACKBONE TO ENABLE NETWORK CONTROL OR AUTOMATIC DEMAND RESPONSE
- OCCUPANCY SENSORS CAN BE ENABLED OR DISABLED BASED ON TIME SCHEDULE.
- FOR NETWORK OPTIONS, SEE NLIGHT BACKBONE DIAGRAM.

### DIAGRAM LEGEND

	NLIGHT AIR
	NORMAL LINE FEED CONSTANT HOT
	EM LINE FEED CONSTANT HOT >30ms TRANSFER
	SWITCH LEG & 0-10V WIRES
	24V WIRES

### BILL OF MATERIAL

QTY	PRODUCT #	DESCRIPTION
2	RPODL-DX-G2	SINGLE GANG, ONE ZONE DIMMING SWITCH (ON/OFF/RAISE/LOWER) LINE VOLTAGE
3	RCMS-PDT-9-G2	CEILING MOUNTED OCCUPANCY + PHOTO SENSOR. PHOTO SENSOR IS DUAL ZONE TYPE.
1	RPP20-D-24V-EFP-G2	0-10V 20 AMP POWER PACK.
1	RPP20-D-24V-EM-EFP-G2	0-10V 20 AMP 90 MIN. EM POWER PACK. > 30ms TRANSFER ALT. RPP20 D ER G2 (SHUNTING)

### SUPPORTS THE FOLLOWING REQUIREMENTS

- ✓ FULL AUTO-OFF VIA OCCUPANCY SENSOR (SECTION 130.1c)
- ✓ LOCAL SWITCH (SECTION 130.1a)
- ✓ MULTI-LEVEL/ DIMMING CONTROL (SECTION 130.1b)
- ✓ AUTOMATIC DEMAND RESPONSE (ADR) READY (SECTION 130.1e)
- ✓ DAYLIGHT HARVESTING (SECTION 130.1d)
- ✓ PLUG-LOAD CONTROL (SECTION 130.5d)