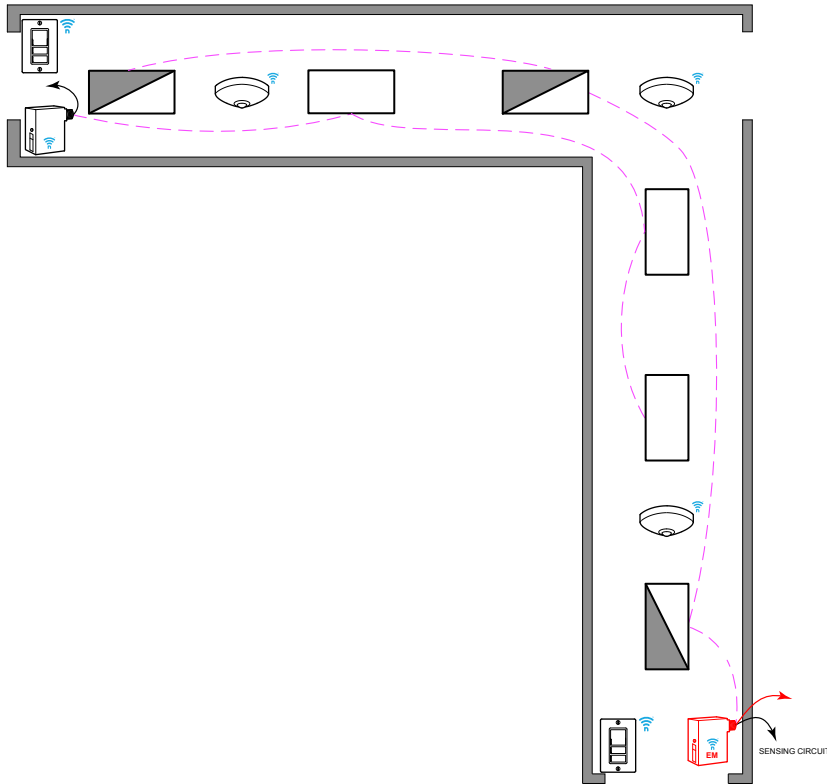


CORRIDOR WITH 0-10V FIXTURES WITH BATTERY DEVICES



SEQUENCE OF OPERATION

LIGHT

- ALL FIXTURES ARE 0-10V DIMMING.
- PROVIDE SWITCH LEG FROM RELAY TO ALL LUMINAIRES.

OCCUPANCY

- LIGHTS AUTOMATICALLY GO TO 100% WHEN OCCUPIED, AND REDUCE TO PARTIAL 50% WHEN UNOCCUPIED.
- SECONDARY TIME OUT IS AVAILABLE TO TURN OFF THE LIGHT IF REQUIRED.

MANUAL

- SINGLE POLE DIMMING SWITCH
- ON/OFF/RAISE/LOWER
- 3-WAY SWITCH
- DIGITAL KEY SWITCH (OPTIONAL)

TIME CLOCK (ADDITIONAL OPTIONS)

- ROOM CAN BE CONNECTED TO NLIGHT BACKBONE TO ENABLE NETWORK CONTROL OR AUTOMATIC DEMAND RESPONSE
- OCCUPANCY SENSORS CAN BE ENABLED OR DISABLED BASED ON TIME SCHEDULE.
- FOR NETWORK OPTIONS, SEE NLIGHT BACKBONE DIAGRAM.

DIAGRAM LEGEND

	NLIGHT AIR
	SWITCH LEG & 0-10V WIRES
	NORMAL LINE FEED CONSTANT HOT
	EM LINE FEED CONSTANT HOT >30ms TRANSFER

BILL OF MATERIAL

QTY	PRODUCT #	DESCRIPTION
2	RPODB-DX-G2	SINGLE GANG, ONE ZONE DIMMING SWITCH (ON/OFF/RAISE/LOWER). BATTERY POWERED
3	RCMSB-7-G2	CEILING MOUNTED OCCUPANCY + PHOTO SENSOR. PHOTO SENSOR IS DUAL ZONE TYPE. BATTERY POWERED
1	RPP20-D-EFP-G2	0-10V 20 AMP POWER PACK.
1	RPP20-D-EM-EFP-G2	0-10V 20 AMP 90 MIN. EM POWER PACK. > 30ms TRANSFER ALT. RPP20 D ER G2 (SHUNTING)

SUPPORTS THE FOLLOWING REQUIREMENTS

- FULL AUTO-OFF VIA OCCUPANCY SENSOR (SECTION 130.1c)
- LOCAL SWITCH (SECTION 130.1a)
- MULTI-LEVEL/ DIMMING CONTROL (SECTION 130.1b)
- AUTOMATIC DEMAND RESPONSE (ADR) READY (SECTION 130.1e)
- DAYLIGHT HARVESTING (SECTION 130.1d)
- PLUG-LOAD CONTROL (SECTION 130.5d)