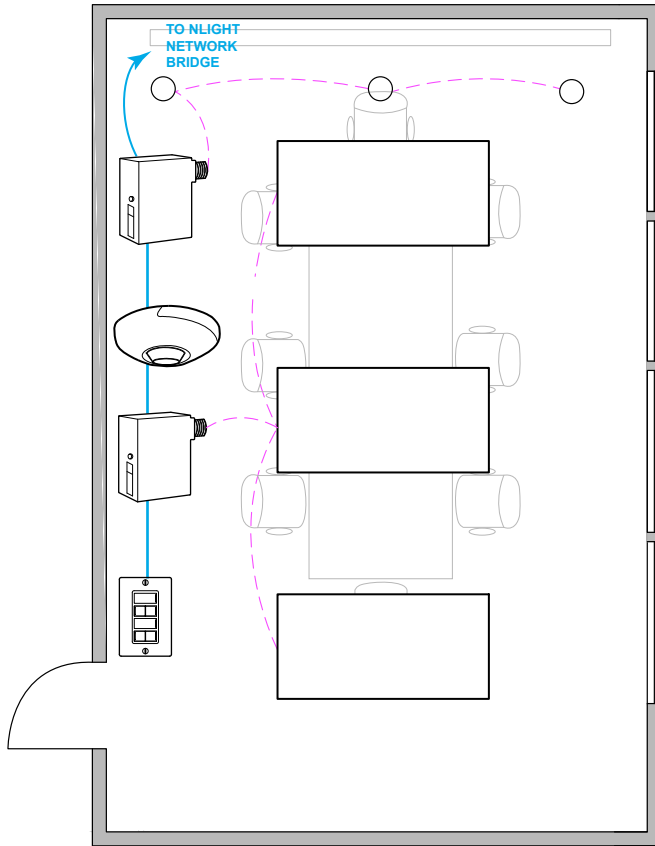


CONFERENCE ROOM WITH 0-10V FIXTURES



SEQUENCE OF OPERATION

LIGHT

- ALL FIXTURES ARE 0-10V DIMMING.
- PROVIDE SWITCH LEG FROM RELAY TO ALL LUMINAIRES.

OCCUPANCY

- VACANCY MODE OR PARTIAL ON UPON OCCUPANCY, AND TURN OFF AUTOMATICALLY WHEN UNOCCUPIED.

DAYLIGHT

- EXEMPT AS GENERAL LIGHTING LOAD IN EITHER PRIMARY OR SECONDARY DAYLIGHT ZONE IS LESS THAN 120W

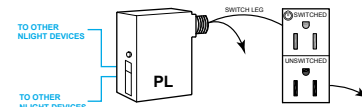
MANUAL

- 2-POLE DIMMING SWITCH

TIME CLOCK (ADDITIONAL OPTIONS)

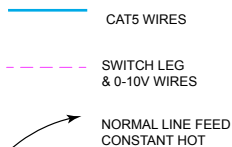
- ROOM CAN BE CONNECTED TO NLIGHT BACKBONE TO ENABLE NETWORK CONTROL OR AUTOMATIC DEMAND RESPONSE
- OCCUPANCY SENSORS CAN BE ENABLED OR DISABLED BASED ON TIME SCHEDULE.
- FOR NETWORK OPTIONS, SEE NLIGHT BACKBONE DIAGRAM.

PLUG LOAD CONTROL DIAGRAM



(REQUIRED FOR NEW POWER DISTRIBUTION)

DIAGRAM LEGEND



BILL OF MATERIAL

	QTY	PRODUCT #	DESCRIPTION
	-	NPP20-PL	ON/OFF 20 AMPS POWER PACK FOR PLUG LOAD (IF REQUIRED)
	1	NCM-PDT-9-RJB	CEILING MOUNTED OCCUPANCY SENSOR
	1	NPODM-2P-DX	SINGLE GANG, 2 POLE DIMMING SWITCH
	2	NPP16 D EFP	16 AMPS POWER PACK FOR 0-10V LUMINAIRE

SUPPORTS THE FOLLOWING REQUIREMENTS

- ✓ FULL AUTO-OFF VIA OCCUPANCY SENSOR (SECTION 130.1c)
- ✓ LOCAL SWITCH (SECTION 130.1a)
- ✓ MULTI-LEVEL/ DIMMING CONTROL (SECTION 130.1b)
- ✓ AUTOMATIC DEMAND RESPONSE (ADR) READY (SECTION 130.1e)
- ✓ DAYLIGHT HARVESTING (SECTION 130.1d)
- ✓ PLUG-LOAD CONTROL (SECTION 130.5d)