

Classroom Lighting



2x4 Recessed Option

Nine recessed highly efficient volumetric architectural recessed troffers illuminate the classroom in a traditional way. They provide the proper lighting levels in a very efficient and cost-effective manner.

A



Linear Recessed Option

Two 24-foot linear recessed continuous row fixtures create a more minimalistic ceiling environment, while still meeting the desired lighting levels. The satin acrylic lens reduces source luminance and glare within the space.

B

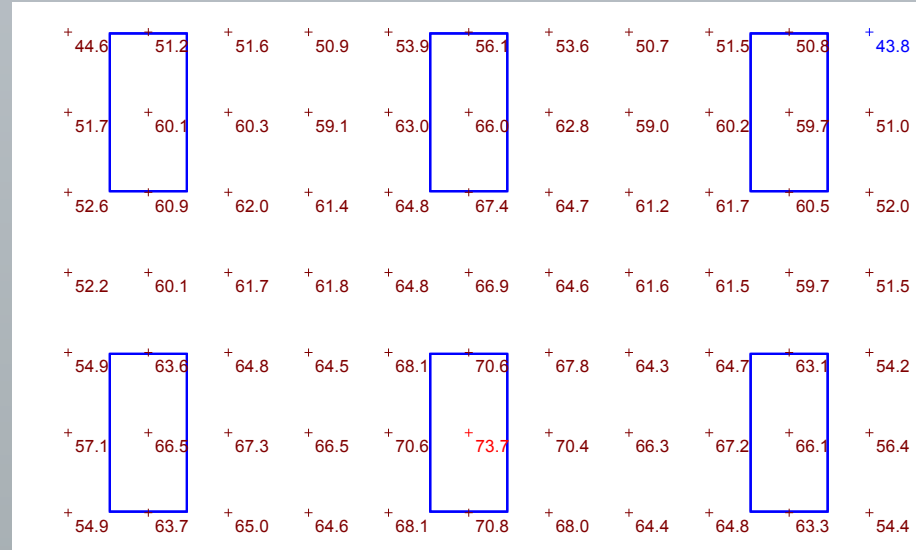


Linear Pendant Option

Two 24-foot linear pendant direct/indirect fixtures achieve the desired lighting levels. The 20% indirect component illuminates the ceiling, reducing the overall contrast within the space.

C

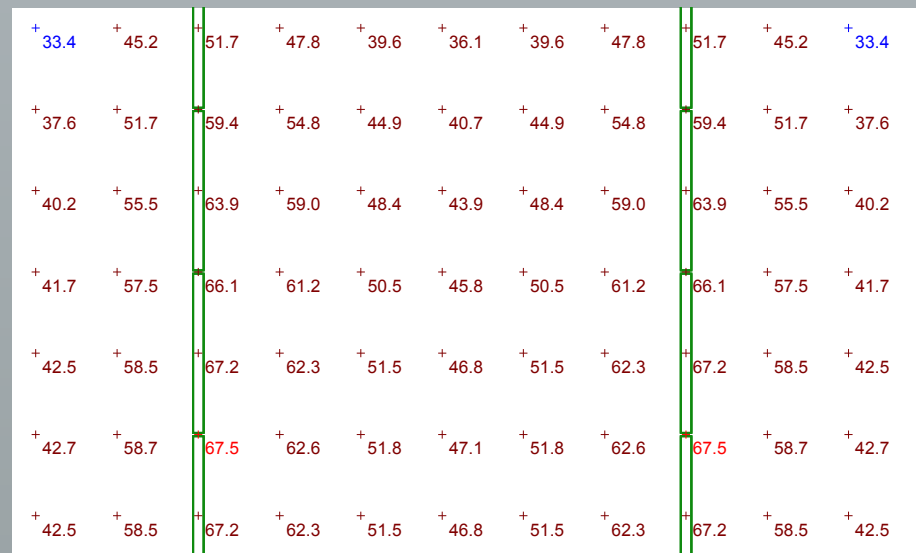
Classroom Lighting



2x4 Recessed Option

- 2 X 4 Recessed Option
- .4 Watts Per SQ'
- 59.8 FC Average (Criteria 50FC)
- Max:Min 1.7:1 (Criteria (2.5:1 or less)
- Average lead time two weeks or less
- Fixture cost per SQ': \$1.20

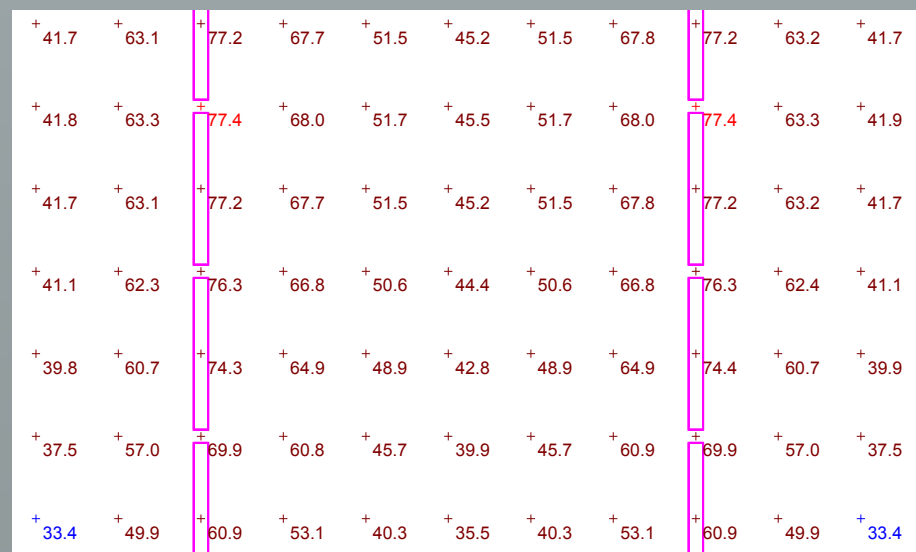
-43%
2019 Title 24



Linear Recessed Option

- Linear Recessed Option
- .4 Watts Per SQ'
- 51.3 FC Average (Criteria 50FC)
- MAX:MIN 2.0:1 (Criteria 2.5:1 or less)
- Average lead time 2 weeks or less
- Fixture cost per SQ': \$3.25

-43%
2019 Title 24



Linear Pendant Option

- Linear Pendant Option
- Mounting Height 7'6" AFF
- Distribution: 20% Up / 80% Down
- .4 Watts Per SQ'
- 54.9 FC Average (Criteria 50FC)
- Max:Min 2.3:1 (Criteria 2.5:1 or less)
- Average lead time 2-4 weeks or less
- Fixture cost per SQ': \$3.50

-43%
2019 Title 24

30' X 30' CLASSROOM. 9' HEIGHT CALCULATIONS AT
2.5' DESK HEIGHT STARTING 4' FROM THE WALLS.

The nLight Advantage for Classrooms



- ✓ Title 24 code compliant
- ✓ SB-327 cybersecurity compliant
- ✓ Fewest devices for easy installation
- ✓ Wired or Wireless tailored solutions
- ✓ Integrated or external device options
- ✓ Local Stock & Support (Design & Startup)

Example of nLight Integrated Solutions:

WIRELESS

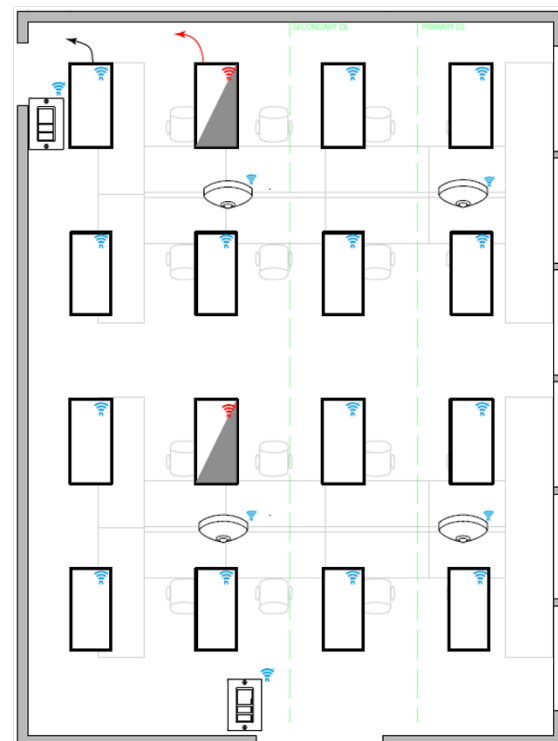
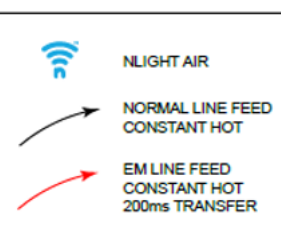


DIAGRAM LEGEND



BILL OF MATERIAL

	QTY	PRODUCT #	DESCRIPTION
	4	RCMSB-7-G2	CEILING MOUNTED OCCUPANCY + PHOTO SENSOR. PHOTO SENSOR IS DUAL ZONE TYPE. BATTERY POWERED
	2	RPODB-DX-G2	SINGLE GANG, ONE ZONE DIMMING SWITCH (ON/OFF/RAISE/LOWER). BATTERY POWERED
	14	-	NLIGHT AIR ENABLED FIXTURES WITH CONSTANT HOT
	2	-	NLIGHT AIR ENABLED FIXTURES WITH EM CONSTANT HOT ON INVERTER/GENERATOR

WIRED

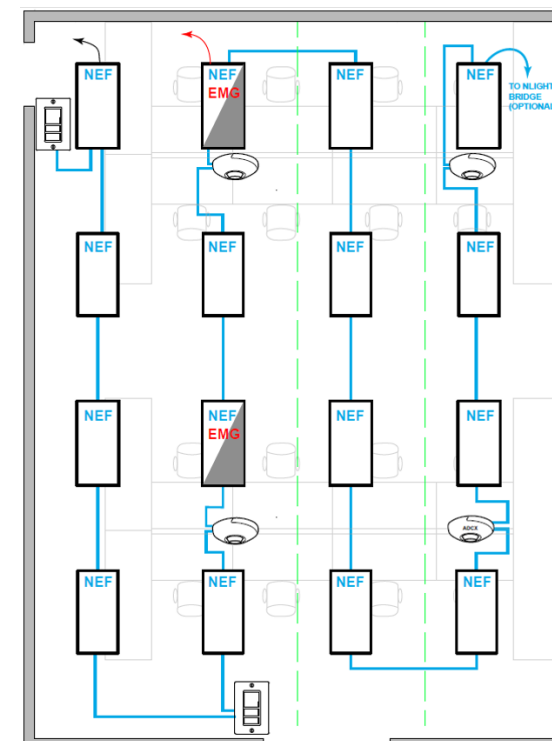
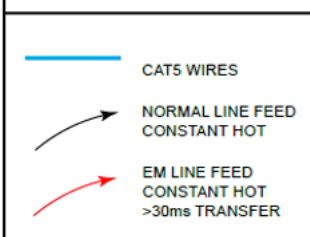


DIAGRAM LEGEND



BILL OF MATERIAL

	QTY	PRODUCT #	DESCRIPTION
	1	NCM-PDT-9-ADCX-RJB	CEILING MOUNTED OCCUPANCY + PHOTO SENSOR. PHOTOCCELL IS DUAL ZONE TYPE.
	3	NCM-PDT-9-RJB	CEILING MOUNTED OCCUPANCY SENSOR.
	2	NPODM-DX	SINGLE GANG, SINGLE ZONE DIMMING SWITCH
	14	-	NLIGHT ENABLED FIXTURE WITH CONSTANT HOT
	2	-	NLIGHT ENABLED FIXTURE WITH EM CONSTANT HOT ON INVERTER/GENERATOR

For more information, visit us at <https://performanceltg.com/controls/>.